

Find out more!

Your local Children's Information Service (CIS): call 0800 096 02 96 to find out your local CIS number to access information on all local childcare, early education and other care and support services for children and parents. Alternatively, you could log onto www.childcare.link.gov.uk for more help in finding childcare and early education.

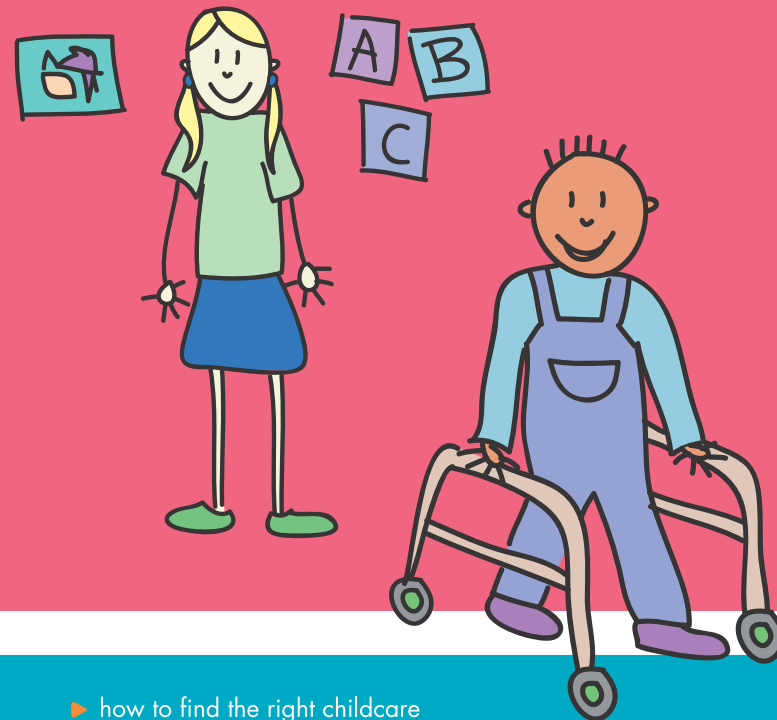
Talking to other parents in your area is always useful: ring Contact a Family on their free national helpline 0808 808 3555 for local contacts and information on Tax Credits, Direct Payments and how to find the best childcare and much more.

You can find information about Sure Start initiatives by logging onto the website at: www.surestart.gov.uk

Copies of leaflets are available in this format, in braille or on audio tape or in any of the following languages: Arabic, Bengali, Chinese, Greek, Gujarati, Hindi, Punjabi, Somali, Turkish, Urdu, Vietnamese and Welsh, free of charge, from DFES Publications, PO Box 5050, Annesley, Nottingham NG15 0DJ.

Tel: 0845 60 222 60
Fax: 0845 60 333 60
E-mail: dfes@prolog.uk.com

Please quote ref: ASFEC14
© Crown copyright 2004



A
SureStart
for every child

SureStart

Information and advice brought to you by the Sure Start Unit, part of the Department for Education and Skills and the Department for Work and Pensions

- ▶ how to find the right childcare
- ▶ paying for childcare
- ▶ who can help?

Care options if you have a child aged 0-11 with a disability or special educational need

Choosing the right childcare!

As your child grows, you may want childcare to:

Go back to work, study or have a break

All early years settings/providers have a Special Educational Needs Coordinator (SENCO) and the table opposite gives you an idea of some of your options.

- ▶ **Children's Information Service:** they have the full picture on high quality childcare options in your area, including childminders, nurseries etc who can provide good care for disabled children. They are there to help you!
- ▶ **Social Services Departments:** contact them about play and leisure services, short breaks and childcare for disabled children.
- ▶ **Your child's school, nursery or playgroup:** ask to speak to the SENCO as they may know about after-school clubs or holiday playschemes.
- ▶ **Local families or Contact a Family Helpline:** speak to other families in your area and contact voluntary organisations, as they may run special schemes or be able to tell you what is available locally.
- ▶ **'Crossroads':** a service that provides trained support workers to enable home carers to have a break from their caring responsibilities. Call 0845 450 0350 for further information.

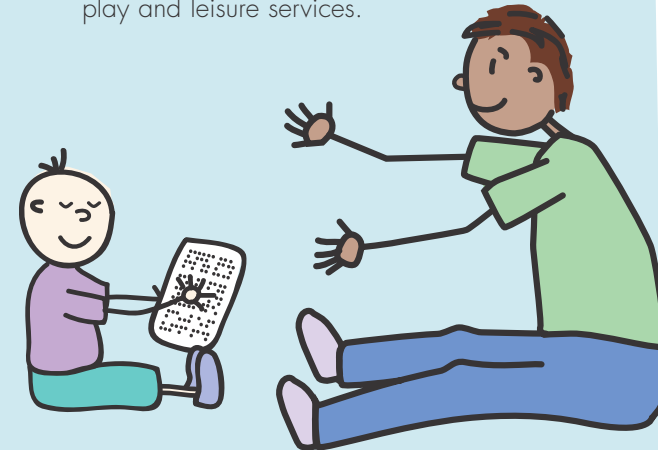
Take a look! Your options could include:

The following options are registered by Ofsted (Office for Standards in Education).

- ▶ **A childminder:** a self employed childcarer working in their own home.
- ▶ **A playgroup or preschool:** offering part or full-time care and trained staff.
- ▶ **A day nursery:** local authority or private, usually with trained staff.
- ▶ **A nursery school:** variable times, usually around school hours.
- ▶ **After school clubs and holiday playschemes:** fit around school hours for school age children with trained playworkers.
- ▶ **Other related services:** children's centres, Sure Start Local Programmes, Neighbourhood Nurseries or Early Excellence Centres are services that offer childcare and other services.

Other options include:

- ▶ **Personal care at home:** someone you employ yourself, perhaps provided through a special scheme (like Crossroads), a personal carer, home childcarer, nanny or au pair. Sometimes trained – it's important to take up references.
- ▶ **Play and leisure services:** your local authority may provide after school or holiday play and leisure services.



Paying for childcare

Don't forget that you can get extra help with the costs of childcare if you have a child who is disabled or with special educational needs. Check the following:

- ▶ **Child Tax Credit and Working Tax Credit:** you may also be eligible for the Disabled Child's Premium. For further information call 0845 300 3900 or visit the website at www.taxcredits.inlandrevenue.gov.uk and order a copy of the free Inland Revenue booklet 'Help with the Costs of Childcare'.
- ▶ **Direct Payments:** your local authority can offer you 'direct payments' (i.e. a cash payment instead of a service) so that you can buy your own support or childcare. For more information call 08701 555 455 and ask for a copy of 'A Parent's Guide to Direct Payments' (quote reference number 31762).
- ▶ **Covering the day-to-day costs of disability:** contact the Benefit Enquiry Line on 0800 88 22 00 for information and advice on the benefits to help with the cost of everyday living.
- ▶ **Ask your Children's Information Service:** there may be special local arrangements to help cover some of the extra costs of childcare.